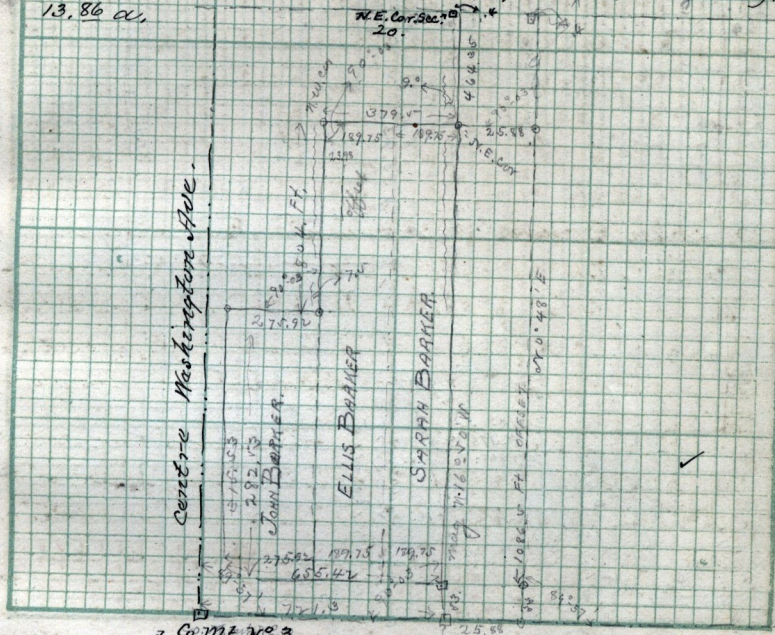


1884. Pt. S.W. 1/4 Sec 17 T.6.N.R.1.W. Beg. 2.69 chs. N. of
 S.E. cor. of said Quar. Sec. W. 4.79 chs., S 2.47 chs. N. 3.80
 chs. N 14° 45' W. 5.86 chs., S 80 1/2° W 1.00 ch., N. 70° 10' W
 6. chs., N 31° 25' W. 4.70 chs., E. 19.17 chs. S 9 chs. to beg.
 13.86 a.



Co. M.C. No. 3.

Scale: Chains per inch.

S.E. cor. N.E. 1/4 Sec. 20, T.6.N.-R.1.W

July 9th 1891 - Survey made for John Barker etc Sec. 20, T.6.N.R.1.W
 John Layman & Baird Chairmen

7-533 - W^m Parker to Annie M. Iverson, July 16-1890.

Pt S.E. 1/4 Sec. 17, T.6.N.R.1.W. Beg. S.W. cor. said 1/4 Sec. N. 20. 2/100
 rods E 3 1/2 rods S 20. 08/100 rods W. 3 1/4 rods to beg

Ties to Co. M.C. No. 39 = S.E. 72.8 Ft to fence post

N. E. 86.0° to pole = N. W. 49.25 ft to metal pole
 S W 84.1 to pole - N.E. 9.2 ft to lamp post